



SEVEN ACP

ALUMINIUM COMPOSITE PANEL



- THE PRODUCTION PASSED CE BS476 INTERTEK TEST
- ISO9001 QUALITY MANAGEMENT SYSTEM CERTIFICATION
- ISO14001 ENVIRONMENTAL MANAGEMENT SYSTEM CERTIFICATION
- CTC CHINA BUILDING MATERIAL CERTIFICATION
- PPG PAINT BASE KYNAR 500



DONG'E BLUE SKY AND SEVEN COLOR BUILDING MATERIALS CO.,LTD

Product Application Projects



Olympic stadium, Moskow,Russia



Aparment, Austrilia



Samitthivej Hospital-Thailand



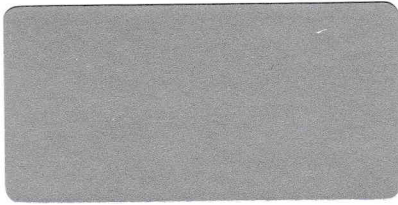
Rihan Height in Zayed Sport City Abu Dhabi - UAE



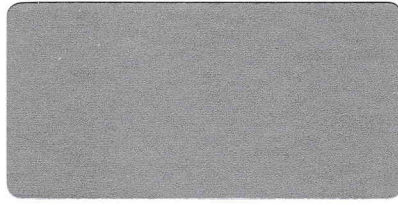
Wuxi Grand Theatre China



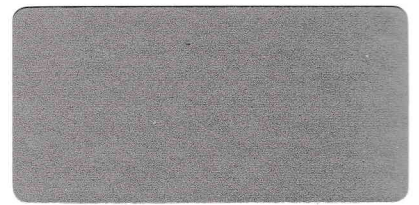
Beijing International Airport China



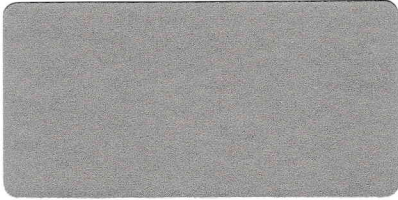
QS-3101 Bright Silver



QS-3102 Sub Silver



QS-3104 Iron Grey



QS-3105 Champagne Golden



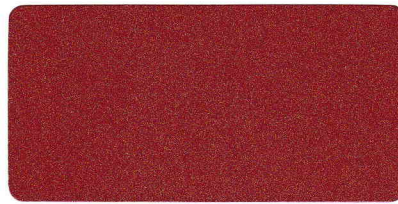
QS-3114 Cooper



QS-3117 Golden



QS-3118 Jade Silver



QS-2013 Pearl Orange



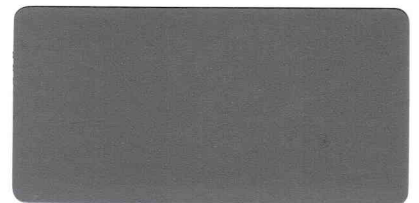
QS-3150 Champagne Gold Metallic



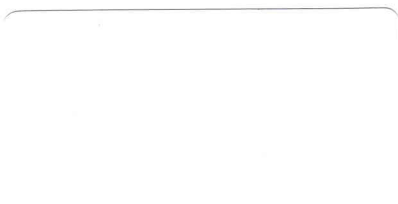
QS-3152 Snow White



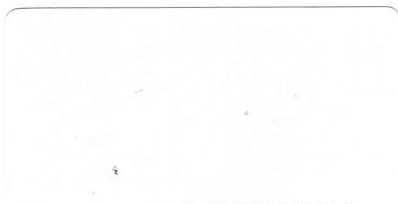
QS-3112 Grey



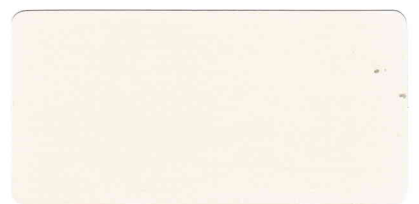
QS-3115 China Grey



QS-3103 White



QS-3125 Milk White



QS-3153 Cream



QS-3136 Pure Gold



QS-3113 Green



QS-7015 Grey RAL



QS-3111 Red



QS-3198 Magenta Red



QS-3202 Espresso



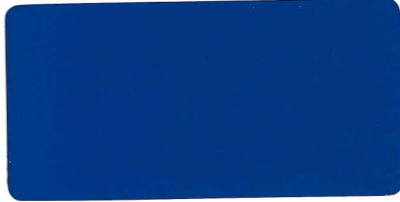
QS-3116 Dark Blue



QS-3108 Coffee



QS-3129 Dark Green



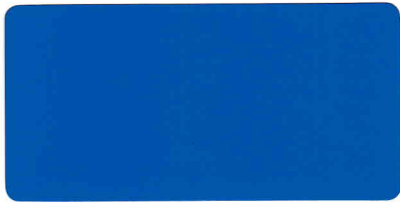
QS-3237 Signal Blue



QS-3123 Dark Yellow



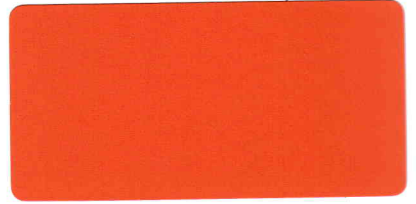
QS-3181 Green Lime



QS-3126 Blue



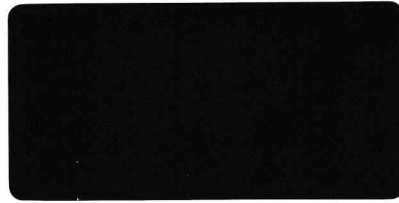
QS-3110 Yellow



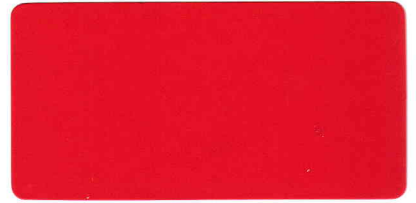
QS-3238 Signal Orange



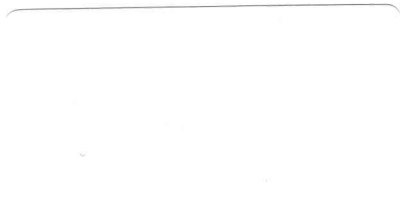
QS-3109 Sea Blue



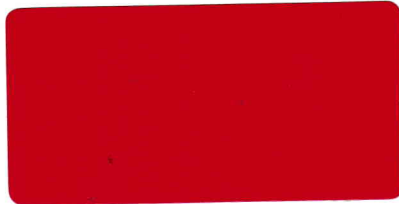
QS-3130 Black



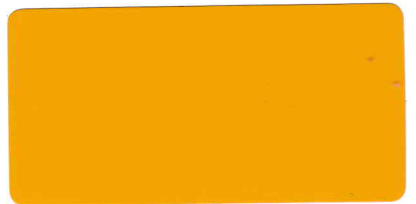
QS-3135 Orange



QS-3176 White Glossy



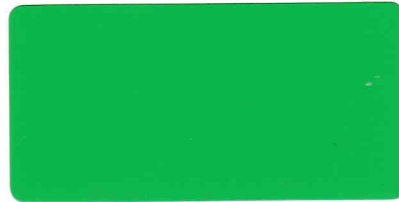
QS-3177 Red Glossy



QS-3231 Yellow Glossy



QS-3235 Blue Glossy



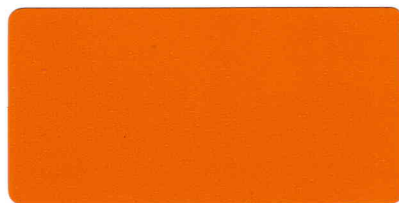
QS-4218 Green Glossy



QS-3003 Ruby Red Glossy



QS-3383 Light Green Glossy



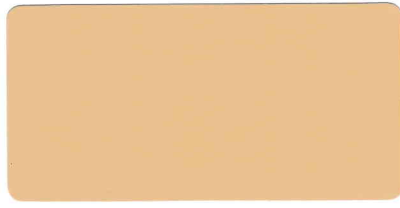
QS-3175 Brilliant Orange Glossy



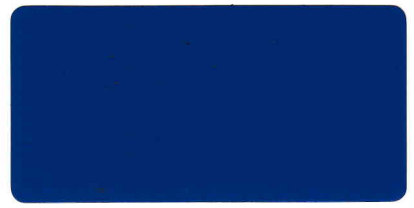
QS-3178 Brown Glossy



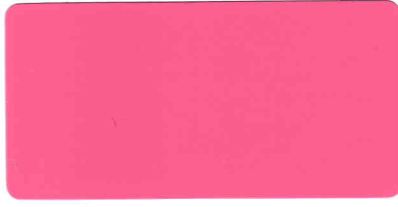
QS-3236 Dark Blue Glossy



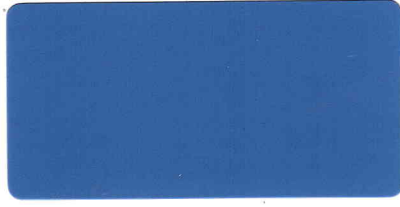
QS-3195 Light Almond Glossy



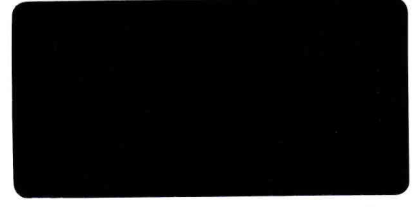
QS-3232 Signal Blue Glossy



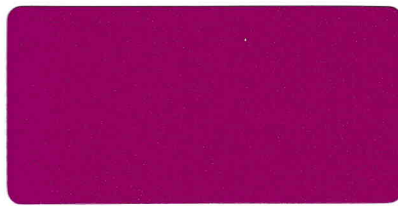
QS-3242 Pink Rose Glossy



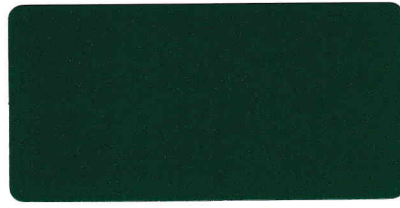
QS-3245 Light Blue Glossy



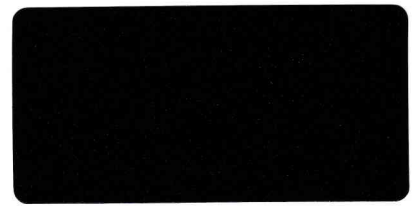
QS-3246 Black Glossy



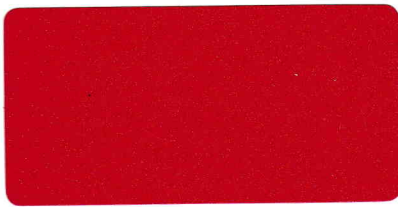
QS-3006 Sparkling Purple



QS-3035 Sparkling Green



QS-3030 Sparkling Black



QS-3244 Sparkling Red



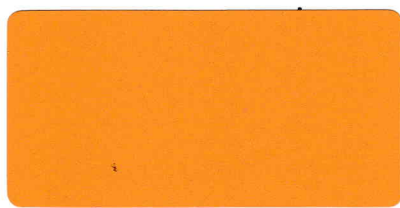
QS-3243 Sparkling Violet



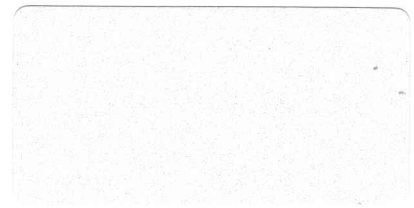
QS-3239 Sparkling Blue



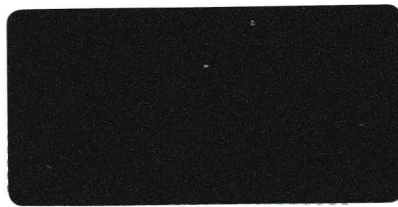
QS-8008 Olive Brown



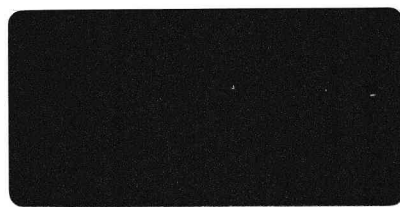
QS-1017 Saffron Yellow



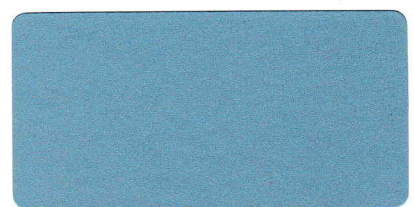
QS-3358 Sparkling White



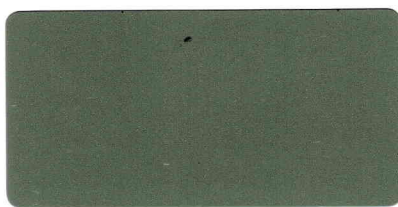
QS-3182 Metallic Grey



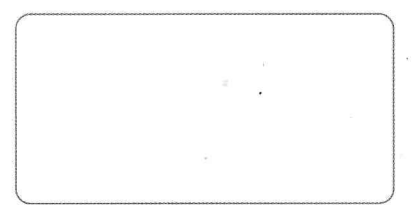
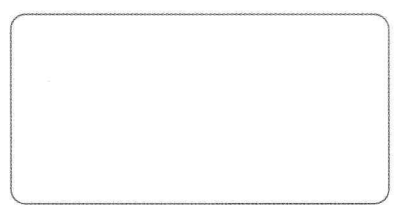
QS-3179 Metallic Black



QS-3319 Metallic Blue

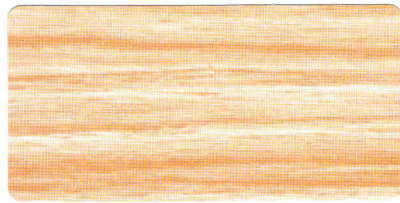


QS-3036 Sparkling Autumn

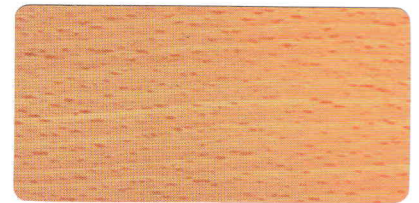




QS-5101 Horse Chestnut



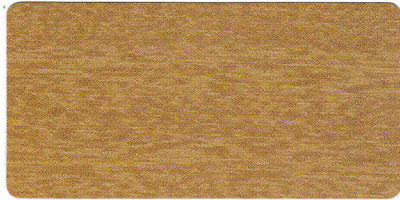
QS-5102 Hazel Bright



QS-5103 Savin Golden



QS-5104 Alpine Maple



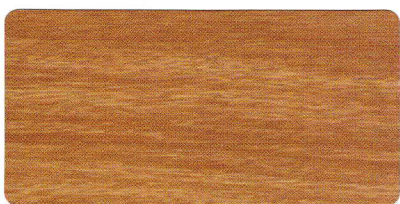
QS-5105 Mezereon Brown



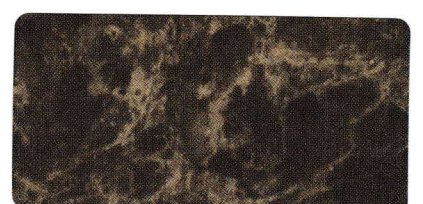
QS-5106 Grape Rose



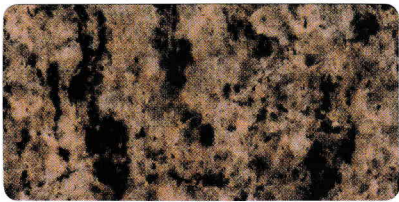
QS-5107 Cornel Tree



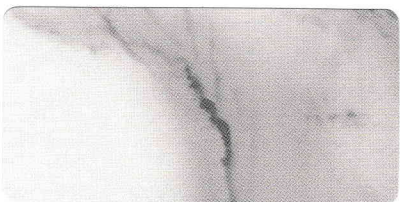
QS-5108 Stripe Daphine



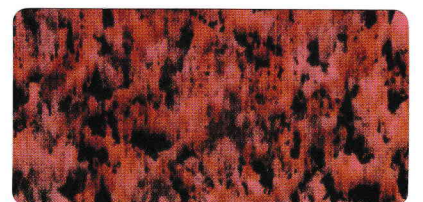
QS-3301 Marble



QS-3302 Giallo Granite



QS-3303 White Granite



QS-3304 Red Granite



QS-7121 Sky Mirror



QS-7122 Spanish Mirror



QS-7119 Gold Mirror



QS-7118 Silver Mirror



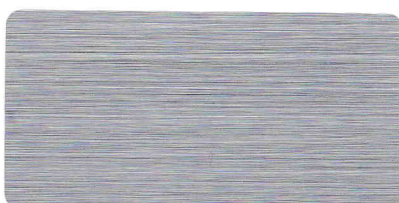
QS-7120 Rose Mirror



QS-7123 Purple Mirror



QS-3197 Brush Bronze

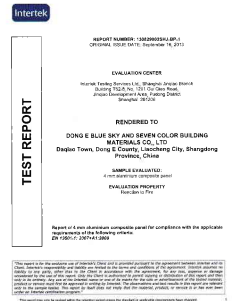


QS-3194 Brush Silver

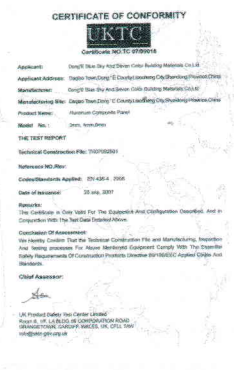


QS-3196 Brush Gold

NO.	test item	standard index		test value	single item determination	
		high-class	qualified class			
1	appearance quality	vestige	indistinct	indistinct	indistinct	high-class
		coating omit	not allowed	not allowed	no	high-class
		ripples	not allowed	indistinct	no	high-class
		rubbls(≤1mm)	not allowed	≤1/m ²	no	high-class
		flaw(≤3mm)	≤3/m ²	≤10/m ²	no	high-class
		abrasion	not allowed	total length≤100m ²	no	high-class
		scratch	not allowed	total area≤300m ²	no	high-class
		total number of abrasion and scratch	not allowed	≤4	0	high-class
2	dimensions deviation	aberration	indistinct	indistinct	indistinct	high-class
		length		±3mm	mm~+1.3mm	passed
		width		±2mm	mm~+1.1mm	passed
		thickness		±0.2mm	+0.04mm~+0.20mm	passed
		squares		≤5mm	1.2mm	passed
		edge unstraightness		≤1mm/m	0.15mm/m	passed
3	coating thickness					
4	gloss tolerance					
5	pencil hardness					
6	coating flexibility					
7	coating adhesive					
8	impact resistance					
9	grinding resistance					
10	boiling water resistance					
11	pullute resistance					
12	acid resistance					
13	alkaline resistance					
14	oil resistance					
15	solvent resistance					
16	scrub resistance					
17	face density					
18	bending strength					
19	bending elastic modulus					
20	penetration resistance					
21	shearing strength					
22	180° peel strength					
23	temperature cycle resistance					
24	thermal expansion coefficient					
25	heat distortion temperature					
26	resistance salt spray					
27	artificial weathering					



NO.	test item	standard index		test value	single item determination	
		high-class	qualified class			
1	appearance quality	vestige	indistinct	indistinct	indistinct	high-class
		coating omit	not allowed	not allowed	no	high-class
		ripples	not allowed	indistinct	no	high-class
		rubbls(≤1mm)	not allowed	≤1/m ²	no	high-class
		flaw(≤3mm)	≤3/m ²	≤10/m ²	no	high-class
		abrasion	not allowed	total length≤100m ²	no	high-class
		scratch	not allowed	total area≤300m ²	no	high-class
		total number of abrasion and scratch	not allowed	≤4	0	high-class
2	dimensions deviation	aberration	indistinct	indistinct	indistinct	high-class
		length		±3mm	0mm~+1.7mm	passed
		width		±2mm	0mm~+1.2mm	passed
		thickness		±0.2mm	+0.8mm~+0.12mm	passed
		squares		≤5mm	1.2mm	passed
		edge unstraightness		≤1mm/m	0.20mm/m	passed
3	coating thickness					
4	gloss tolerance					
5	pencil hardness					
6	coating flexibility					
7	coating adhesive					
8	impact resistance					
9	boiling water resistance					
10	acid resistance					
11	alkaline resistance					
12	oil resistance					
13	solvent resistance					
14	scrub resistance					
15	face density					
16	bending strength					
17	bending elastic modulus					
18	penetration resistance					
19	shearing strength					
20	180° peel strength					
21	temperature cycle resistance					
22	thermal expansion coefficient					
23	heat distortion temperature					



Product Application Projects



Gedung Seven-Alam Sutera Indonesia



Greenbay Indonesia



Mayapada Hospital Indonesia



Telkomsel Indonesia



CCTV Beijing China



Taizhou International Medical Center China

DONG'E BLUE SKY AND SEVEN COLOR BUILDING MATERIALS CO LTD

Add: Daqiao Town Dong'E County, Shandong Province, China

Te:0086-635-3584833 Fax:0086-635-3586360 PC:252218

Http://www.sevenpanel.com

E-mail sevenpanel@sevenpanel.com

PICC The Peoples' Insurance Company
of china Insures The produces